



Farm Road

£825,000

Stylish Four-Bedroom Family Home in a Prime Edgware Location

Set on the ever-popular Farm Road, this beautifully maintained four-bedroom, two-bathroom home offers the perfect blend of modern style and family-friendly living. Immaculately presented throughout, the property provides spacious accommodation ideal for both everyday life and entertaining.

The ground floor features a welcoming front reception room, leading into a bright and airy open-plan kitchen, living, and dining space — the heart of the home — with bi-folding doors opening onto a well-kept rear garden. A guest WC adds extra convenience.

Upstairs, the first floor hosts three well-proportioned bedrooms and a sleek family bathroom. The top floor is home to a large principal bedroom complete with an en-suite, creating a peaceful and private retreat.

Further highlights include off-street parking, side access, and a superb location just a short walk from Edgware High Street's array of shops, cafés, restaurants, and excellent transport links. Sole Agent.

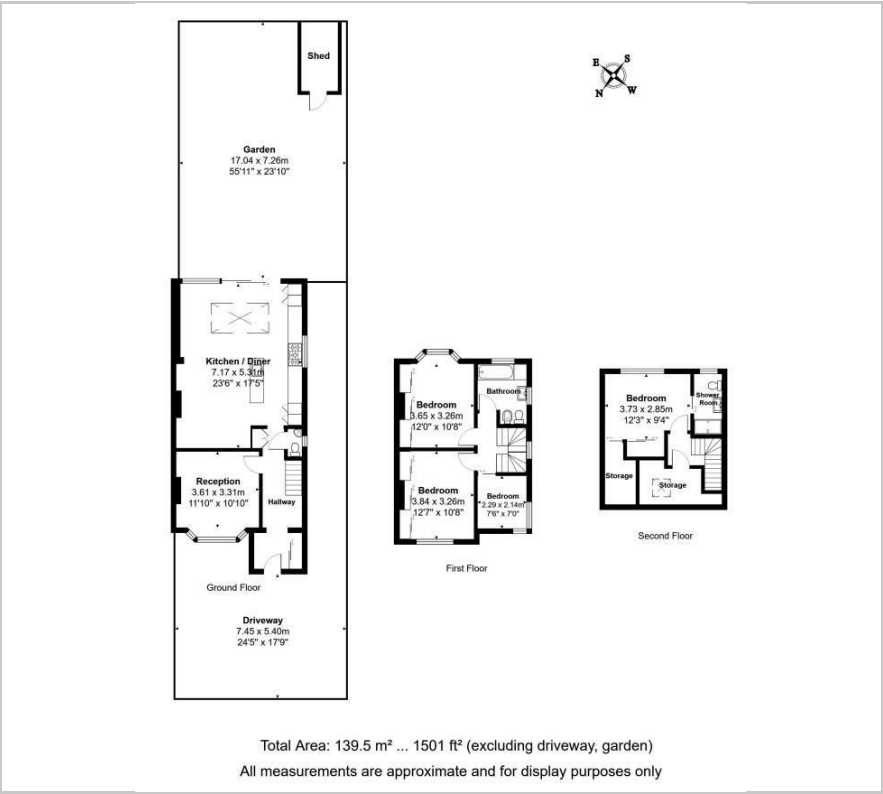
- 1500 Sq Ft
- 4 Bedroom Family Home
- 2 Bathrooms + 1 W/C
- Excellent Condition
- Spacious Open-Plan Family Room
- Formal Reception Room
- Walking Distance To Edgware High Street
- Prime Location

Viewing

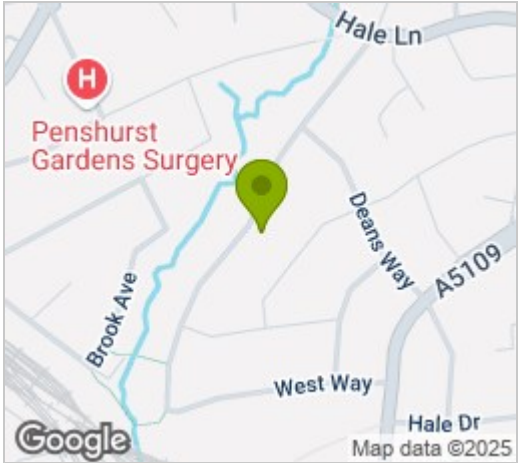
Please contact our Mill Hill Office on 02089590011 if you wish to arrange a viewing appointment for this property or require further information.



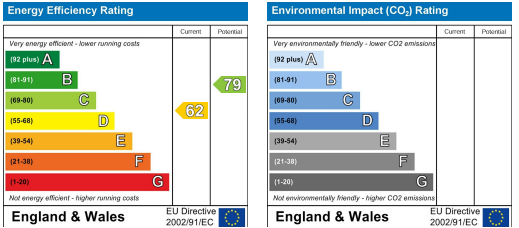
Floor Plan



Area Map



Energy Efficiency Graph



These particulars, whilst believed to be accurate are set out as a general outline only for guidance and do not constitute any part of an offer or contract. Intending purchasers should not rely on them as statements of representation of fact, but must satisfy themselves by inspection or otherwise as to their accuracy. No person in this firms employment has the authority to make or give any representation or warranty in respect of the property.